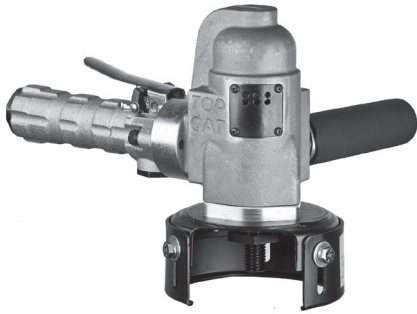




**Guard Size: 4 Inch • 6 Inch**  
(100 mm) (150 mm)

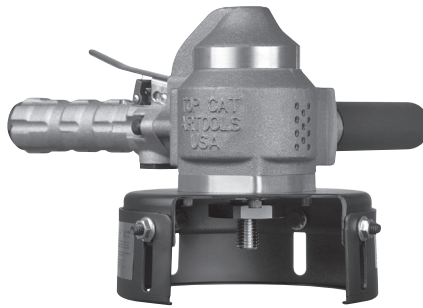
## Vertical Grinders for use with Type 11 Cup Wheels

### 520V Series



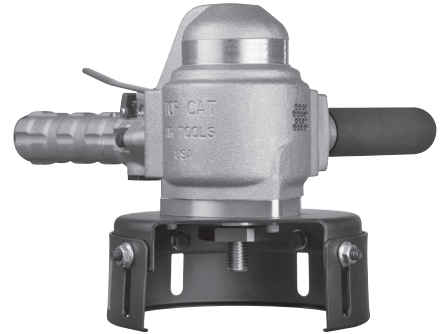
**520VK;8000;411**

### 58C Series



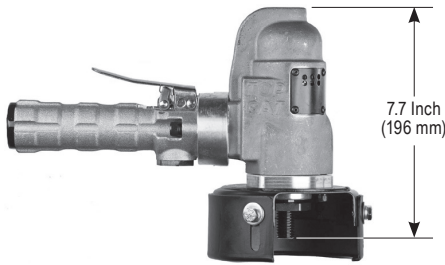
**58CK;6000;611**

### 68C Series



**68CK;6000;611**

Wheel Size	Rated Speed	Lever Style	MODEL NUMBER	Wheel Size	Rated Speed	Lever Style	MODEL NUMBER	Wheel Size	Rated Speed	Lever Style	MODEL NUMBER
4 Inch (100 mm)	9000 RPM	Standard Lever	520VL;9000;411	4 Inch (100 mm)	9000 RPM	Standard Lever	58CL;9000;411	6 Inch (150 mm)	6000 RPM	Standard Lever	68CL;6000;611
		Safety Lever	520VK;9000;411			Safety Lever	58CK;9000;411			Safety Lever	68CK;6000;611

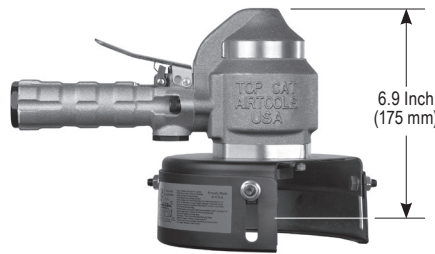


**HP** 2.0 H.P. (1.5 kW)

**Lbs** 7.5 Lbs. (3.4 Kg)

**cfm** 20 cfm (9.4 L/s) Free Speed  
40 cfm (18.9 L/s) Max

**SUPPLY** 1/2" NPT Inlet  
1/2" (13 mm) Hose Size

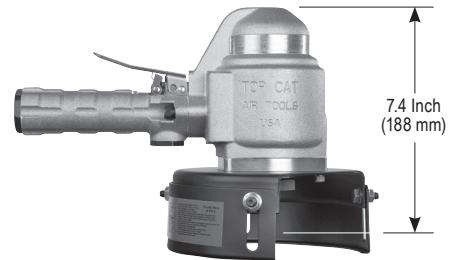


**HP** 3.0 H.P. (2.3 kW)

**Lbs** 10.3 Lbs. (4.7 Kg)

**cfm** 25 cfm (18.8 L/s) Free Speed  
60 cfm (28.3 L/s) Max

**SUPPLY** 1/2" NPT Inlet  
1/2" (13 mm) Hose Size



**HP** 4.0 H.P. (3.0 kW)

**Lbs** 11.8 Lbs. (5.3 Kg)

**cfm** 25 cfm (18.8 L/s) Free Speed  
75 cfm (35.4 L/s) Max

**SUPPLY** 1/2" NPT Inlet  
1/2" (13 mm) Hose Size

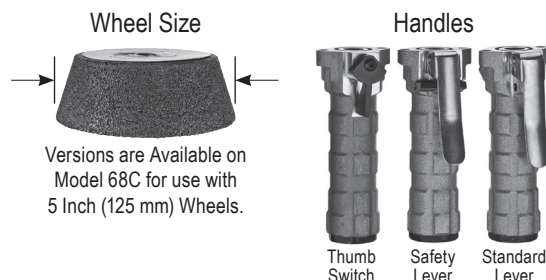


Piped Away Exhaust Available to Reduce Sound Emissions.

### STANDARD EQUIPMENT

- Tool
- Operating Instructions and Service Manual
- Wrenches (sizes based on options)

### ALTERNATE OPTIONS



### WHEEL MOUNTING

